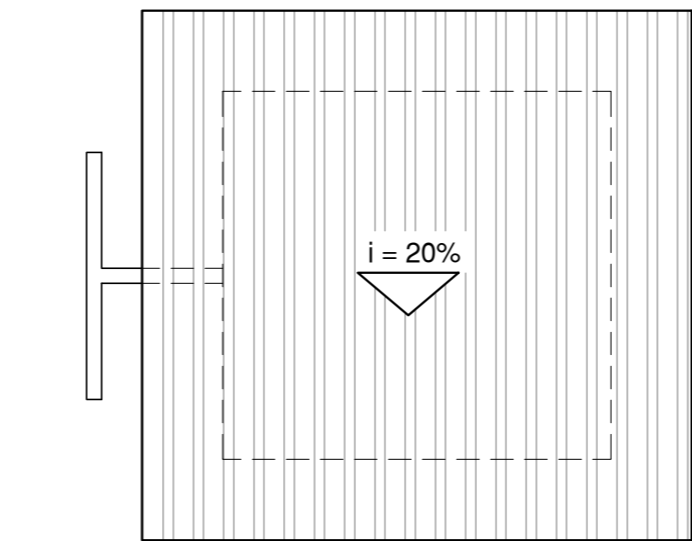


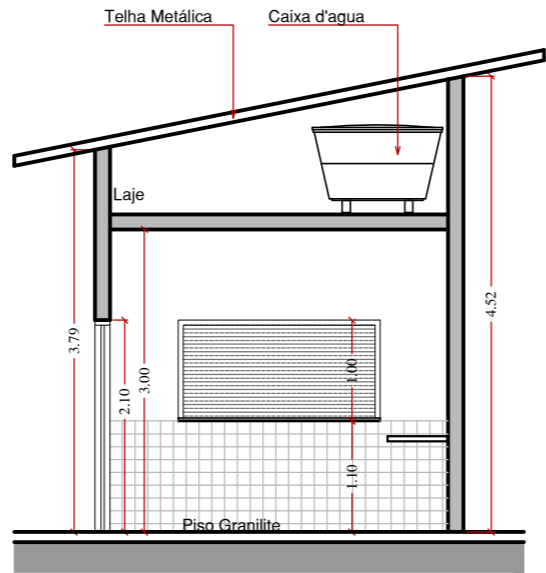
PLANTA BAIXA



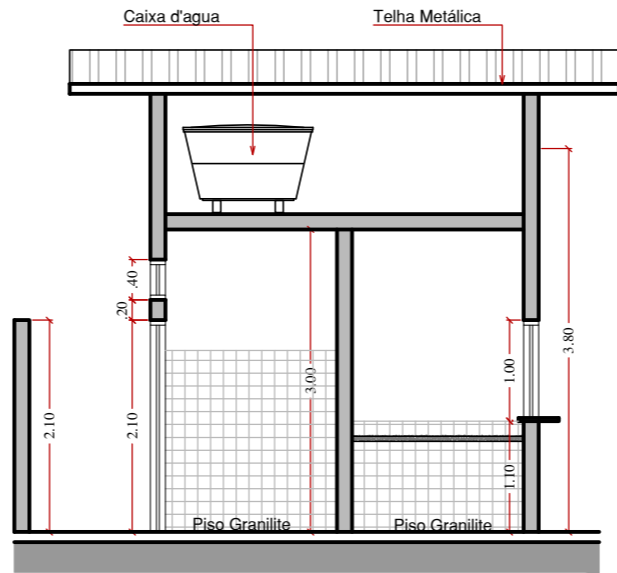
COBERTURA

CAIXILHOS					
	LARG.	ALT.	PEIT.	QT.	ILUM.
P1	0,90 m	2,10 m	-	2	1,89 m²
P2	1,00 m	2,10 m	-	1	2,10 m²
J1	1,40 m	0,40 m	2,30 m	2	0,56 m²
J2	2,00 m	1,00 m	1,10 m	1	2,00 m²
					TIPO
P1					Abrir - ferro
P2					Enrolar
J1					Basculante
J2					Enrolar

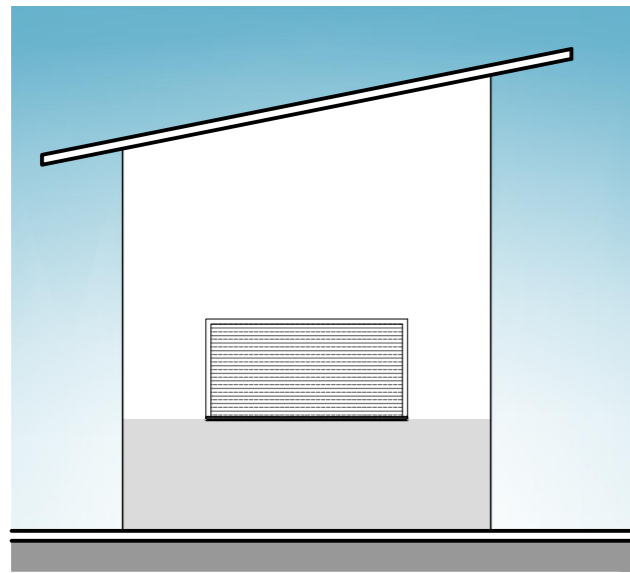
- LEGENDA
- 1 Bancada Pia - granito
  - 2 Balcão - granito



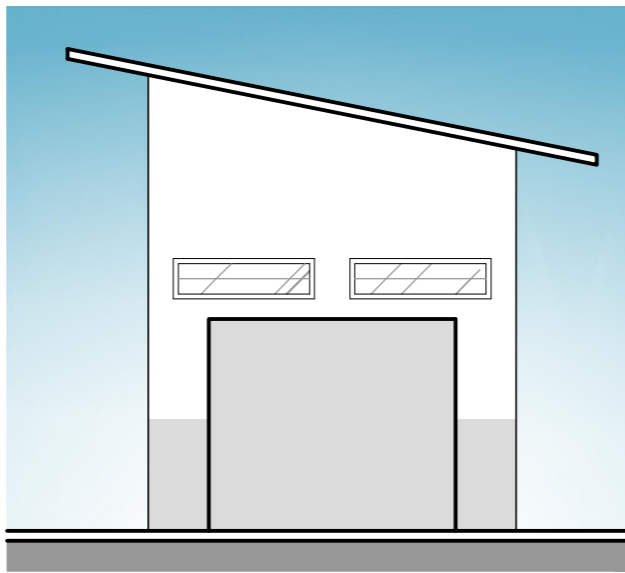
CORTE AA



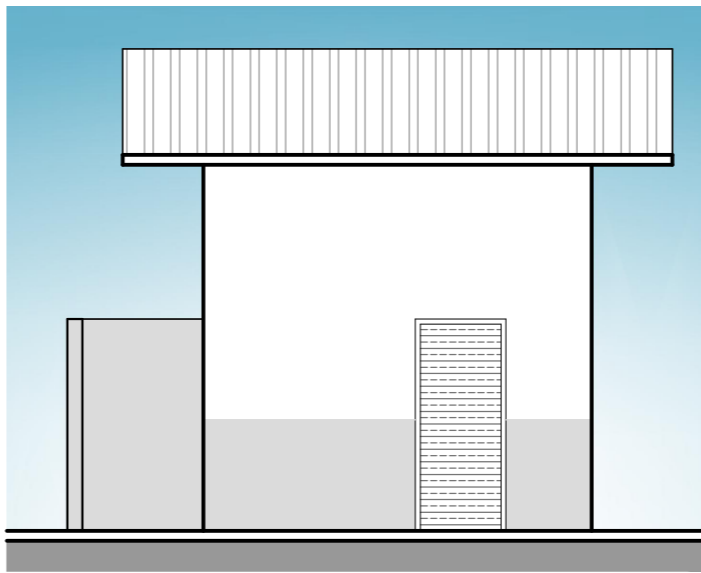
CORTE BB



VISTA 01



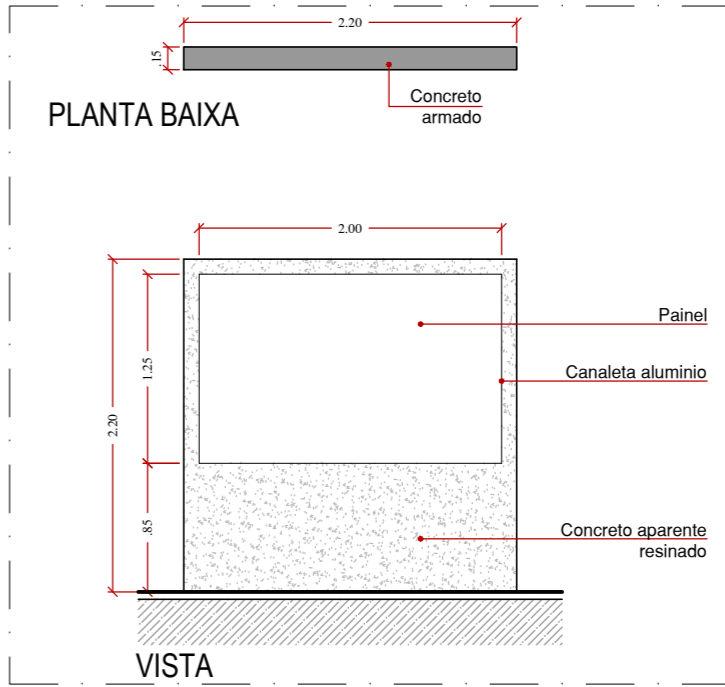
VISTA 02



VISTA 03

QUIOSQUE COM BANHEIROS

esc. 1/75



MURAL

esc. 1/50

PROJETO ARQUITETÔNICO

Folha 2/2

Proprietário: Prefeitura Municipal de Santo Antonio de Posse

Obra: PARQUE GUADALUPE - FASE 2

Local: Bairro Jd. Maria Helena

Município: Santo Antonio de Posse / SP

Situação sem escala:

VER NO MAPA DO MUNICÍPIO

Prefeit Municipal  
João Leandro Lolli

Autor de Projeto e Orçamento  
Engº. Leonardo da S. Granziera  
CREA 5069194055  
A.R.T.: \_\_\_\_\_

Maio/2024